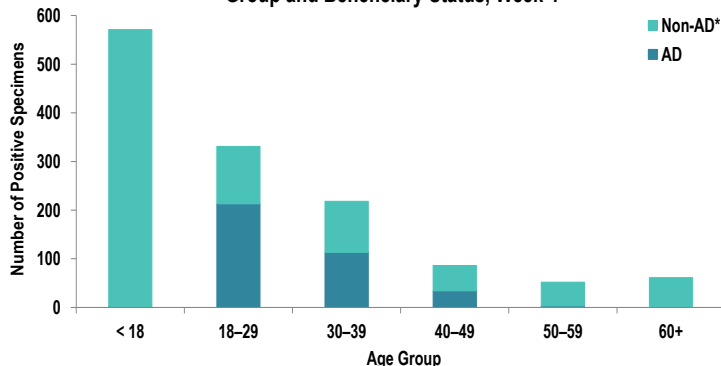


SUMMARY

Influenza activity remains elevated, but stable, in the Army population during Week 4— a less than 1 percentage-point decrease since Week 3 was noted. Influenza B percent positivity increased slightly from Week 3 to Week 4, and RSV activity in the Army population continues to decrease. Additionally, five influenza-associated hospitalizations were reported during surveillance week 4, which is half the number reported during Week 3. Nationwide, influenza activity remains elevated, with 15.8% of specimens tested by clinical laboratories being positive for influenza A or B, according to the Centers for Disease Control and Prevention (CDC). Although respiratory illness activity is stable and decreasing in some geographical areas in the U.S., it is still important to take preventive actions, like avoiding close contact with people who are sick or if you are sick, washing hands thoroughly, and disinfecting frequently touched surfaces.

DEMOGRAPHICS

Positive Respiratory Specimen Results from Army MTFs by Age Group and Beneficiary Status, Week 4



AD: Three hundred and sixty-four positive respiratory specimens were collected from active duty (AD) service members (SMs) during Week 4; 58.5% (n=213) of the positive specimens were collected from SMs 18 – 29 years of age.

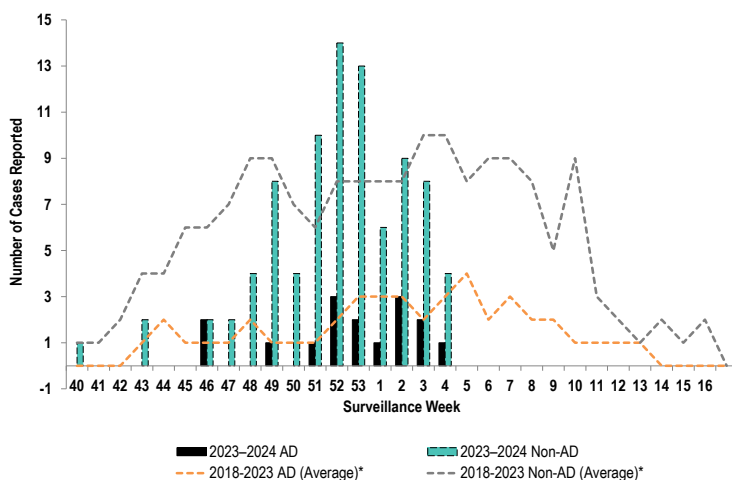
Non-AD: Nine hundred and fifty-five positive respiratory specimens were collected from non-AD individuals during Week 4; 59.7% (n=570) of the positive specimens were collected from individuals under 18 years of age and 12.4% (n=118) from individuals who are 18 – 29 years old.

*Non-AD=All individuals that are not active duty service members.

The age and beneficiary status of some cases were not available. Therefore, all calculations involving these variables were conducted using only available data. Differences in total results, and age- and beneficiary status-specific results may be noted throughout the report.

INFLUENZA-ASSOCIATED HOSPITALIZATIONS

Army Influenza-Associated Hospitalizations Reported in DRSi by Onset Week



Five influenza-associated hospitalizations with an onset date in Week 4 were reported to the Disease Reporting System internet (DRSi). The season total thus far is 103 hospitalizations. The Week 4 average during the 2018 – 2023 seasons was 12 hospitalizations (with an average of 127 hospitalizations reported from the start of the season through Week 4).

The DRSi does not capture cases older than 65 years old for influenza-associated hospitalizations.

*Data from the 2020–2021 and 2021–2022 influenza seasons are not included in comparison calculations due to the unusually low incidence of influenza.

Data are preliminary and subject to change.

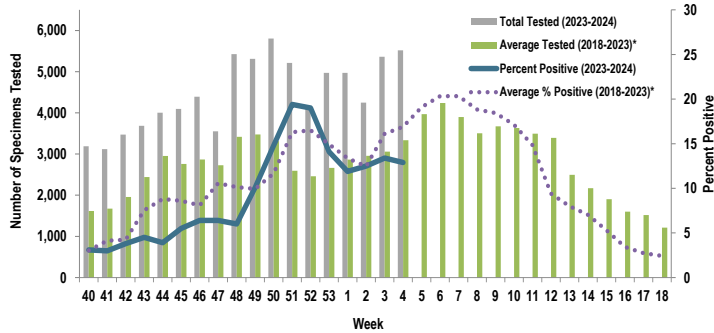
Disclaimer: The mention of any non-federal entity and/or its products is for informational purposes only, and not to be construed or interpreted, in any manner, as federal endorsement of that non-federal entity or its products.

Questions?
Email DCPH-A-DEP

INFLUENZA A ACTIVITY - ARMY

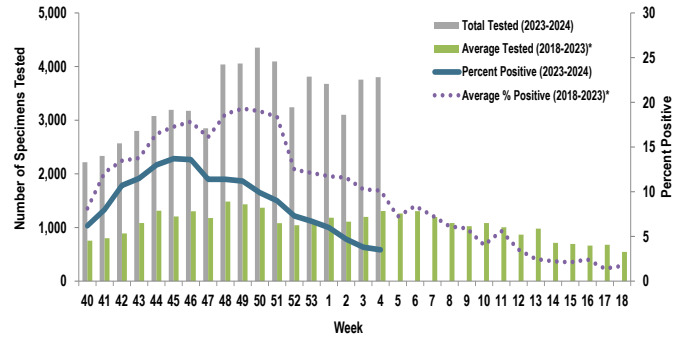
RSV ACTIVITY - ARMY

Proportion of Positive Influenza A Specimens for U.S. Army, 2023-2024



Of the 5,517 specimens tested for influenza A during Week 4, 12.9% (n=711) were positive. This was a decrease from Week 3.

Proportion of Positive RSV Specimens for U.S. Army, 2023-2024



Of the 3,803 specimens tested for RSV during Week 4, 3.5% (n=134) were positive. This was a decrease from Week 3.

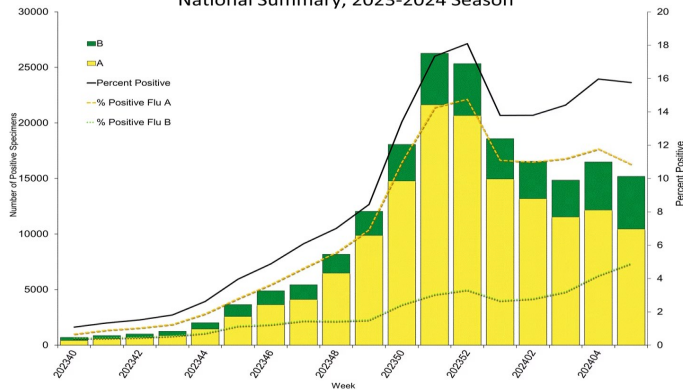
*Data from the 2020-2021 and 2021-2022 influenza seasons are not included in comparison calculations due to the unusually low incidence of influenza.

		Week 1	Week 2	Week 3	Week 4	Season Total
Army MTF Laboratory Results, 2023-24	Adenovirus	17	12	11	8	222
	Enterovirus	38	25	31	40	803
	Influenza A	590	532	720	711	8,152
	Influenza B	185	188	285	413	2,788
	Parainfluenza	16	8	9	14	205
	RSV	221	146	141	134	5,359
	Negative	3,955	3,386	4,216	4,247	63,970
	Total	5,022	4,297	5,413	5,567	81,499

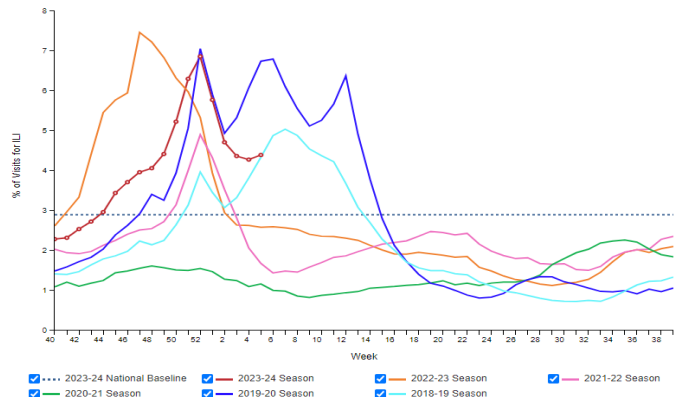
Of the 5,567 specimens tested during Week 4, 23.7% (n=1,320) were positive for any type of respiratory illness. Influenza A accounted for 53.9% (n=711) of the positive results, influenza B accounted for 31.3% (n=413), RSV accounted for 10.2% (n=134), enterovirus accounted for 3.0% (n=40), parainfluenza accounted for 1.1% (n=14), and adenovirus accounted for 0.6% (n=8). Additionally, the reported number of specimens tested increased 2.8% from Week 3 to Week 4. Significantly more tests for influenza have been conducted this season compared to past seasons; 80,465 specimens have been tested for influenza A so far this season compared to the average of 49,132 specimens during the same time period in 2018-2023*.

INFLUENZA-LIKE ILLNESS (ILI) ACTIVITY - UNITED STATES

Influenza Positive Tests Reported to CDC by U.S. Clinical Laboratories, National Summary, 2023-2024 Season



Percentage of Outpatient Visits for Respiratory Illness Reported by The U.S. Outpatient Influenza-like Illness Surveillance Network (ILINet), Weekly National Summary, 2023-24 Season and Selected Previous Seasons

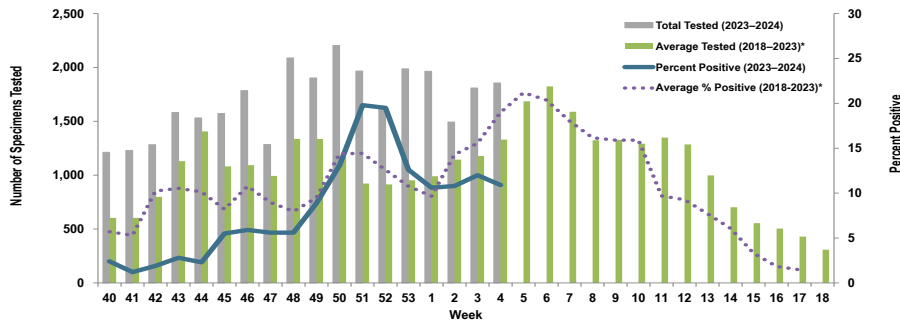


Nationwide in Week 4, incident ILI activity was 4.4%; this is above the national baseline of 2.9%. Additionally, a total of 96,379 specimens were tested for influenza by select clinical laboratories and submitted to the CDC; 15,192 (15.8%) were positive. Influenza A accounted for 68.8% (n=10,453) of the total positive specimens.

Locations providing Week 4 laboratory data as of 7 February 2024: Camp Zama, Carlisle Barracks, Ft. Belvoir, Ft. Bliss, Ft. Campbell, Ft. Cavazos, Ft. Carson, Ft. Drum, Ft. Eisenhower, Ft. Eustis, Ft. Gregg-Adams, Ft. Huachuca, Ft. Irwin, Ft. Jackson, Ft. Johnson, Ft. Knox, Ft. Leavenworth, Ft. Leonard Wood, Ft. Lewis, Ft. Liberty, Ft. Meade, Ft. Moore, Ft. Novosel, Ft. Riley, Ft. Sam Houston, Ft. Sill, Ft. Stewart, Korea, Landstuhl Regional Medical Center, Redstone Arsenal, Tripler Army Medical Center, the U.S. Military Academy at West Point, and Walter Reed National Military Medical Center.

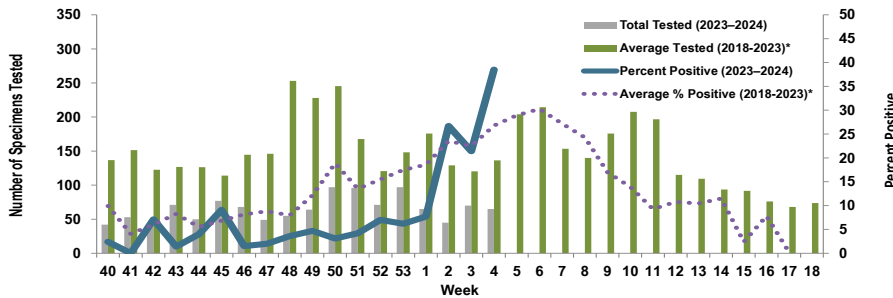
Proportion of Influenza A Positive Specimens by Week and Medical Readiness Command, 2023–2024 as Compared to 2018–2023*

Medical Readiness Command - East



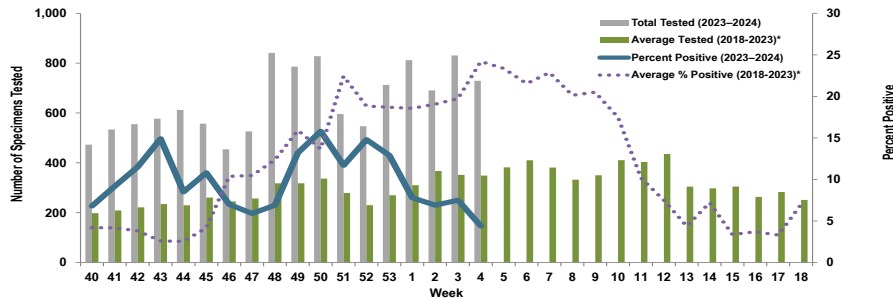
Week 4			
Age Group	AD	Non-AD	Season Total
< 18	1	64	986
18–29	48	15	518
30–39	21	16	437
40–49	5	12	306
50–59	2	9	225
60+	0	9	261
Total	77	125	2,733

Medical Readiness Command - Europe (Landstuhl Regional Medical Center)



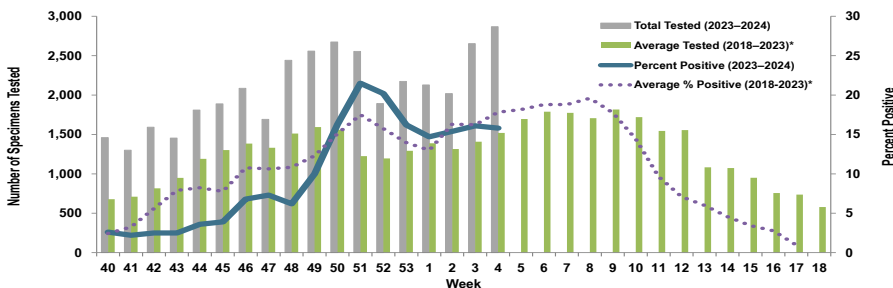
Week 4			
Age Group	AD	Non-AD	Season Total
< 18	0	9	36
18–29	1	1	20
30–39	3	2	15
40–49	0	3	15
50–59	0	3	6
60+	0	3	4
Total	4	21	96

Medical Readiness Command - Pacific



Week 4			
Age Group	AD	Non-AD	Season Total
< 18	0	8	305
18–29	7	1	393
30–39	4	2	228
40–49	4	0	90
50–59	0	3	44
60+	0	3	86
Total	15	17	1,146

Medical Readiness Command - West



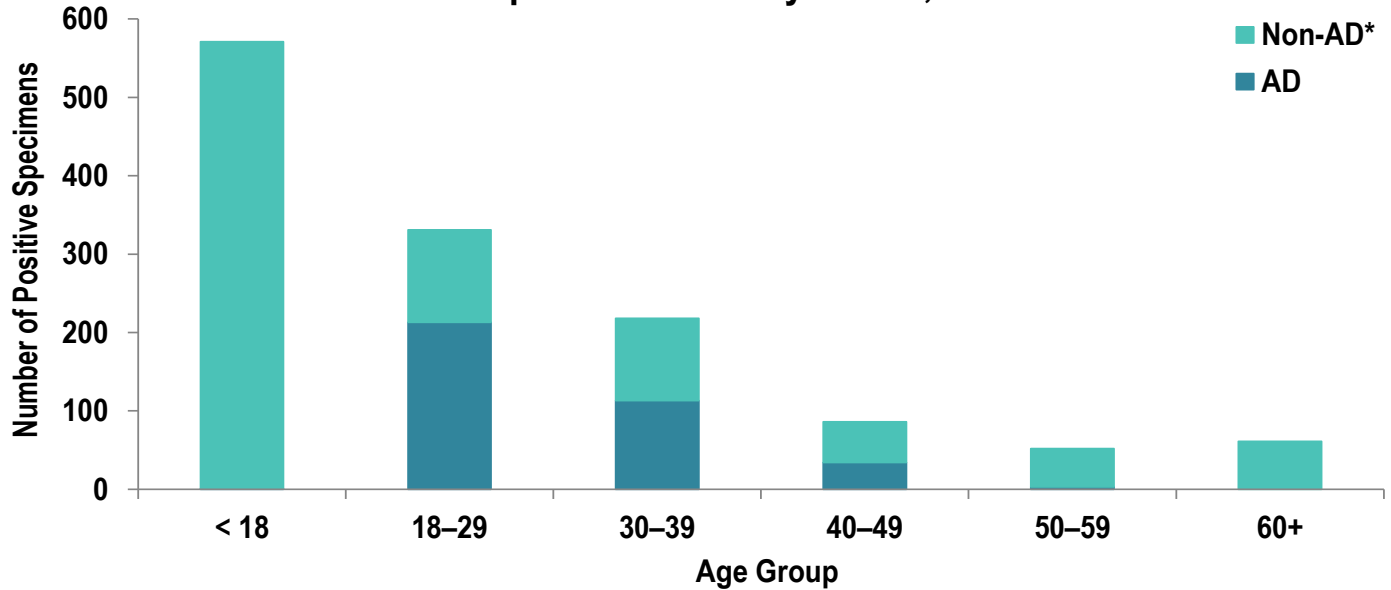
Week 4			
Age Group	AD	Non-AD	Season Total
< 18	0	144	1,561
18–29	81	68	935
30–39	34	49	648
40–49	12	13	396
50–59	1	20	284
60+	0	29	348
Total	128	323	4,172

*2018–2019, 2019–2020, and 2022–2023 influenza seasons. Data from the 2020–2021 and 2021–2022 influenza seasons are not included in comparison calculations due to the unusually low incidence of influenza.

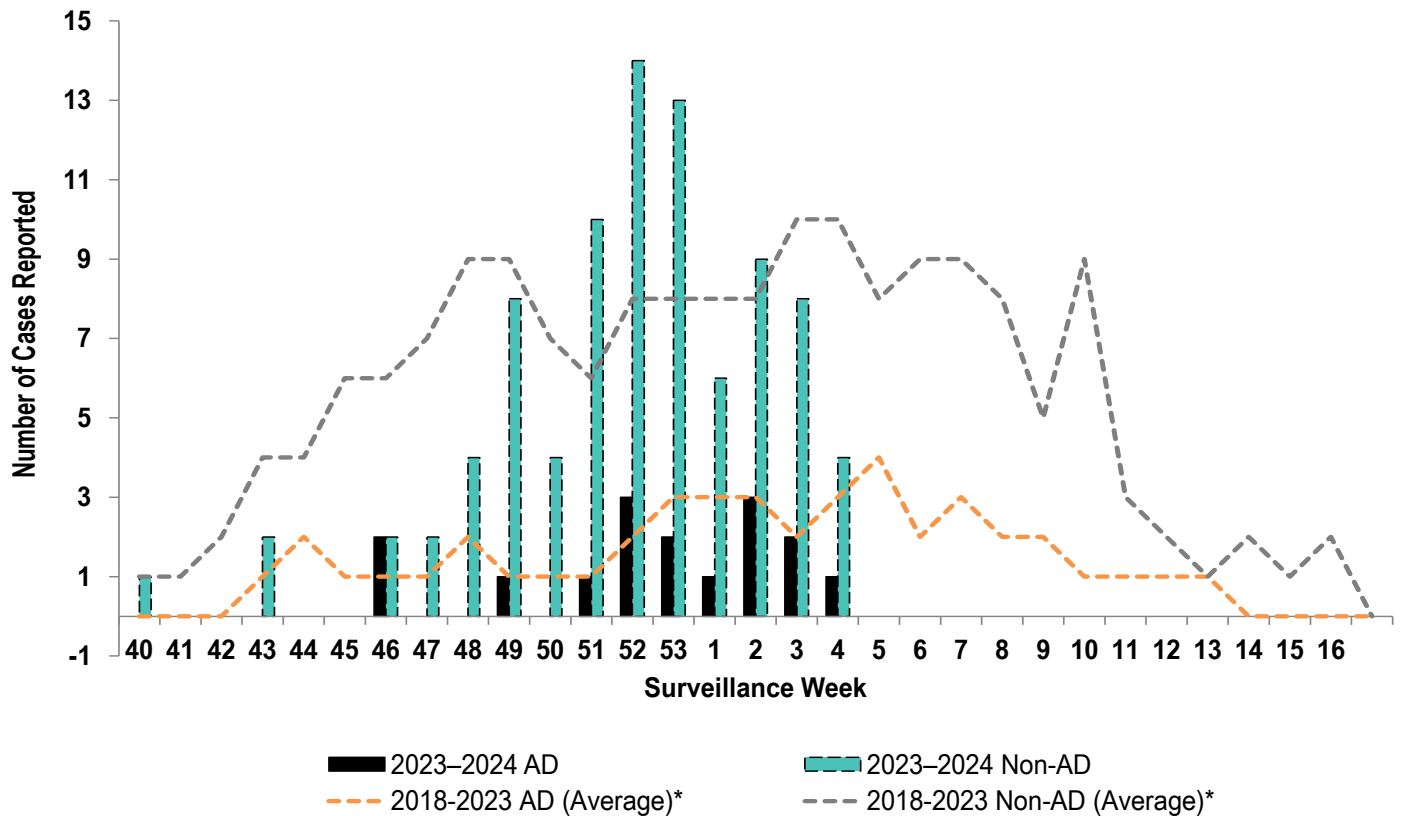
Number of Positive Influenza A Specimens by Region and Duty Status

Region	Week 1		Week 2		Week 3		Week 4	
	AD	Non-AD	AD	Non-AD	AD	Non-AD	AD	Non-AD
MRC-East	64	145	58	103	76	141	77	125
MRC-Europe	1	4	4	8	6	9	4	21
MRC-Pacific	32	31	24	24	32	30	15	17
MRC-West	123	190	107	204	121	305	128	324

Positive Respiratory Specimen Results from Army MTFs by Age Group and Beneficiary Status, Week 4

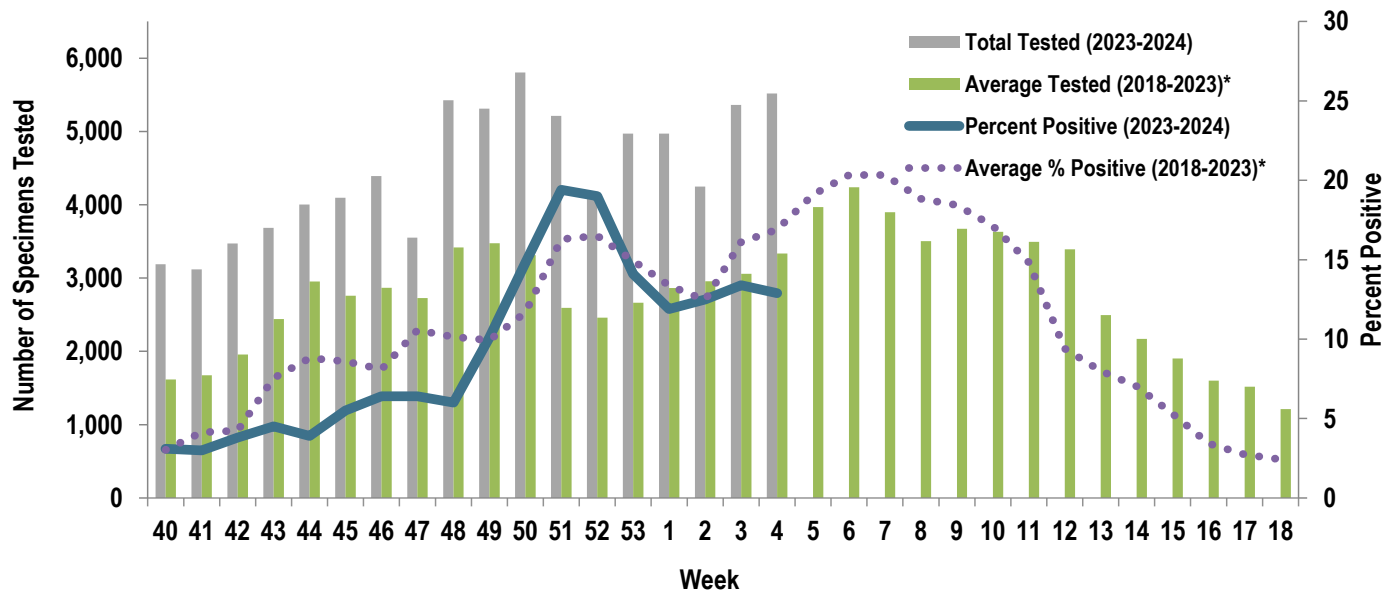


Army Influenza-Associated Hospitalizations Reported in DRSi by Onset Week



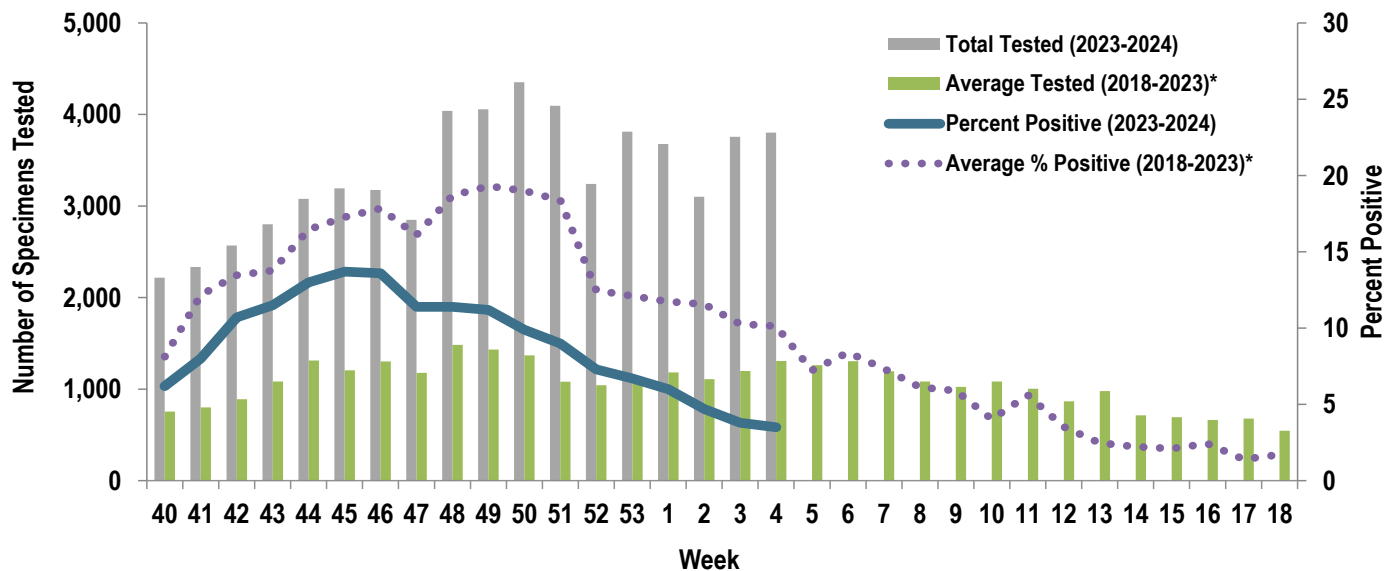
*2018-2019, 2019-2020, and 2022-2023 influenza seasons. Data from the 2020-2021 and 2021-2022 influenza seasons are not included in comparison calculations due to the unusually low incidence of influenza.

Proportion of Positive Influenza A Specimens for U.S. Army, 2023-2024



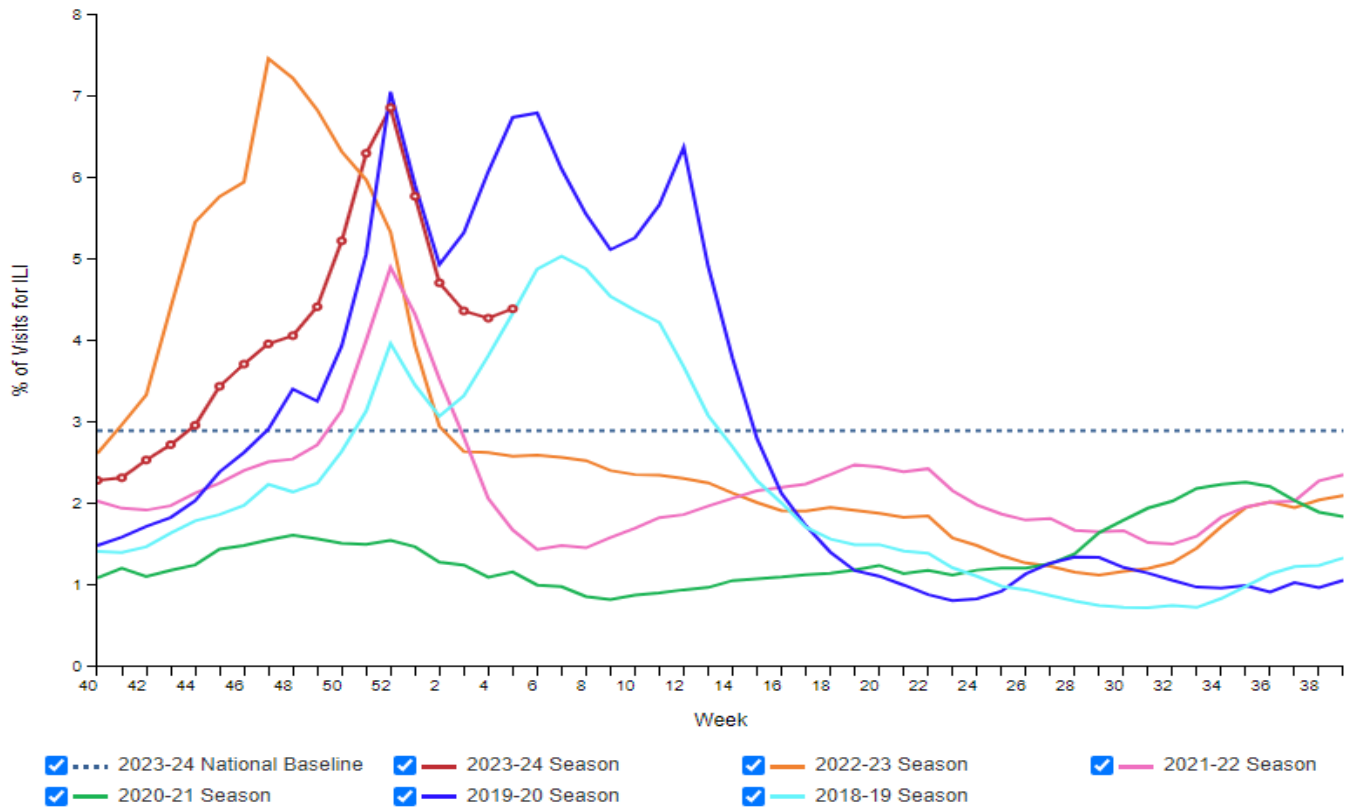
*2018–2019, 2019–2020, and 2022–2023 influenza seasons. Data from the 2020–2021 and 2021–2022 influenza seasons are not included in comparison calculations due to the unusually low incidence of influenza.

Proportion of Positive RSV Specimens for U.S. Army, 2023-2024



*2018–2019, 2019–2020, and 2022–2023 influenza seasons. Data from the 2020–2021 and 2021–2022 influenza seasons are not included in comparison calculations due to the unusually low incidence of influenza.

Percentage of Outpatient Visits for Respiratory Illness Reported by The U.S. Outpatient Influenza-like Illness Surveillance Network (ILINet), Weekly National Summary, 2023-24 Season and Selected Previous Seasons



Influenza Positive Tests Reported to CDC by U.S. Clinical Laboratories, National Summary, 2023-2024 Season

